

Artwork Focus

Alberto Giacometti

Spoon Woman (Femme cuillère),

1926 (cast 1954)

[View on Nasher website](#)

This sculpture is titled *Spoon Woman*.

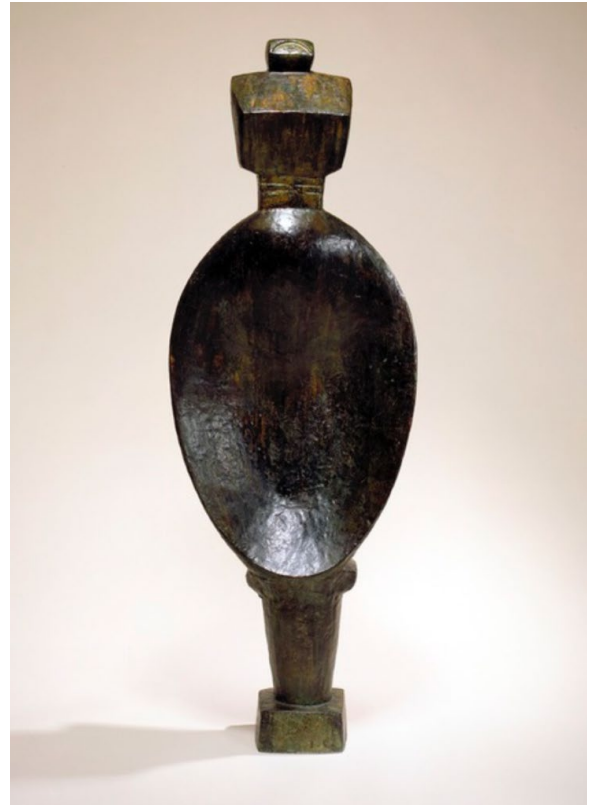
Which parts of this sculpture remind you of a spoon?

Which parts remind you of a person?

What is a spoon? What do you use a spoon for?

The artist who created this sculpture, Alberto Giacometti, was influenced by African art. Specifically by the ceremonial spoons created by the Dan people in West Africa.

[View a Dan ceremonial spoon.](#)



What are some similarities between the Dan ceremonial spoon and *Spoon Woman*?

What are the differences?

In the Dan culture, the spoon is associated with a woman's role as a generous provider of hospitality who has the capability to take good care of those around her. Spoon sculptures are thought to possess and convey power and are used in the ceremonial giving of food.

Sketch a ceremonial spoon to be used during one of your family traditions. What will you be celebrating? Who will be at the ceremony?

Alberto Giacometti, *Spoon Woman (Femme cuillère)*, 1926 (cast 1954). Bronze, 56 3/4 x 20 x 9 in. (144.1 x 50.8 x 22.9 cm.). Raymond and Patsy Nasher Collection, Nasher Sculpture Center, Dallas, Texas.

Nasher Sculpture Center