



Family Guide

Roy Lichtenstein

Text and illustrations by Paulina López

Roy Lichtenstein was an American artist. He was part of the **Pop Art** movement that began in the 1950s, where artists used images from television, advertisements, and popular culture in their artworks.



Seeing Spots

Many of Lichtenstein's artworks have tiny, evenly spaced circles called Ben-Day dots. Old comics and newspapers used Ben-Day dots to show value, or how light and dark something looked. Mixing yellow, red, and blue Ben-Day dots was an inexpensive way to show many colors in printed materials.

Can you spot these comic book elements in any of Lichtenstein's artworks on view?

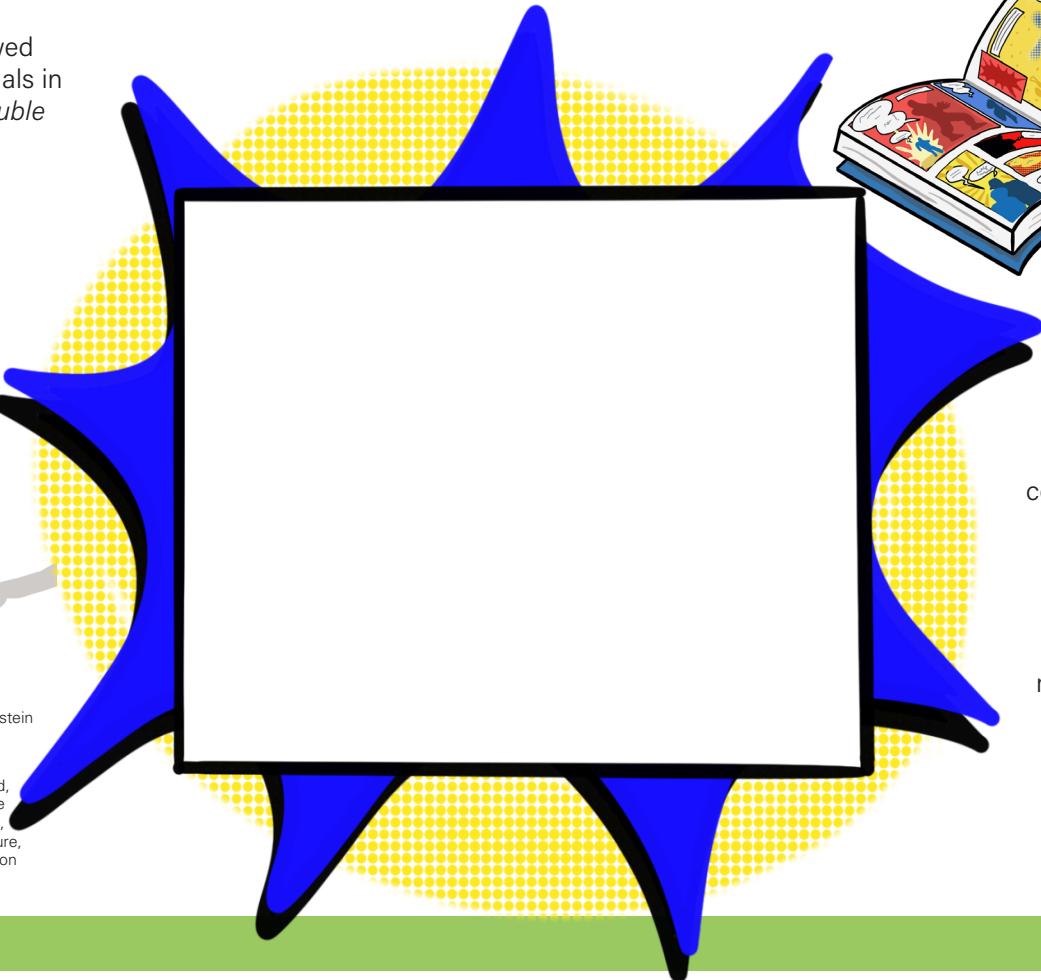
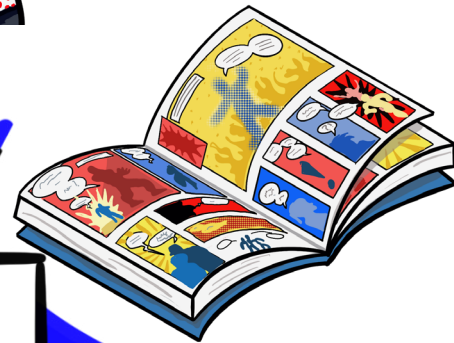


Crazy for Comics

The bright colors and bold lines in Lichtenstein's sculptures were inspired by comic books. He liked comics because of their emotional subjects, which often showed conflict or love.

What might *Head with Blue Shadow* (1965) be feeling? Write it in the thought bubble.

Parallel lines are another element the artist borrowed from popular print materials in his artworks, such as *Double Glass* (1979-1980)



Your Turn!

Make your own comic-style sketch below. First, draw the outline of an object. Then, add dots and lines to show dark, medium, and light parts.

Roy Lichtenstein in the Studio is made possible by support from the Roy Lichtenstein Foundation and the Dallas Tourism Public Improvement District (DTPID).

The Nasher Sculpture Center is supported, in part, by Nasher Members, the Christine P. Gancarz Fund at The Dallas Foundation, The City of Dallas Office of Arts and Culture, Bonnie E. Cobb, and the Texas Commission on the Arts.