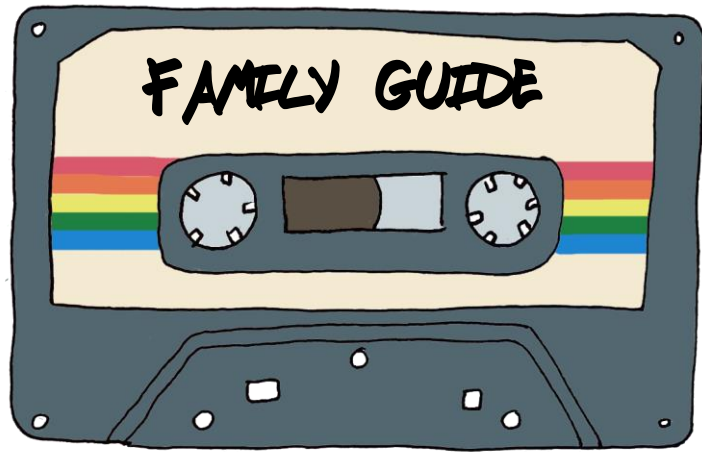


# MIXTAPE



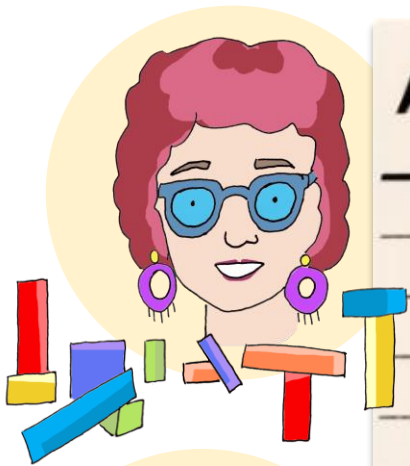
Welcome to the Nasher Sculpture Center. Our current exhibition is called *Nasher Mixtape*. A mixtape is a collection of songs that someone recorded onto a cassette tape. They were popular in 70s, 80s and 90s as a way for hip-hop artists, DJs, and friends to share their music.

Just like a mixtape or a playlist, an art exhibition can be:

- Created with love
- Full of emotion
- Surprising
- A way to learn about new artists

You might move around the exhibition like:

- Classical music, at a slow tempo
- Jazz, moving in and out of galleries to get a feel for the space
- Pop music, with one thing that hooks you



## A SOMEWHERE OVER THE RAINBOW

**ARTIST: JUDY CHICAGO**

Judy Chicago is a trailblazer in Feminist Art, which celebrates women, their stories and their accomplishments. She has worked with canvas, glass, porcelain, oils, spray paint, needlework and even used fireworks and dry ice in her artworks.

## ROCK WITH YOU

**ARTIST: MELVIN EDWARDS**

In 1956 Melvin Edwards began seriously listening to jazz. His favorite musicians are Thelonious Monk, Charlie Parker, Miles Davis, John Coltrane and Sonny Rollins. Edward's approach to sculpture is much like jazz, improvising with what he sees, handles and remembers.



## B

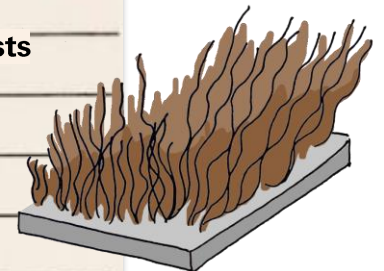
## I FEEL THE EARTH MOVE

**ARTIST: MAREN HASSINGER**

Maren Hassinger lives and works in New York. She began studying dance at the age of 5, and aspects of dance and performance continue to impact her sculptures. Hassinger is sensitive to the body and how it interacts with the space around her art. Her sculpture, *Field*, is not moving, but looks like it could gently sway and twist.

**Do any of your hobbies or interests influence your art?**

**If this sculpture was a dance move what would it look like?**



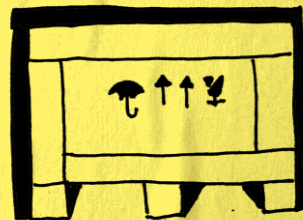
# BEHIND THE MUSIC

This exhibition was organized by a **curator**. Curators study art and art history, they research to learn more about artworks and sometimes speak to artists to learn more about their ideas and process. Curators select artworks to help tell a story.

Curators work with other arts professionals to create an exhibition. A **registrar** keeps track of the museum's collection and organizes any movement of artwork. **Conservators** use science to help care for and preserve artworks. **Art handlers** are specially trained to move artwork safely.



Curator Catherine Craft planned this exhibition.



Registrars pack artworks in special crates.



Art handlers use a device called a gantry to lift large sculptures.



Conservators use a variety of tools to take care of artworks.

## Bonus Track

### WALKING INTO SPIDER WEBS

Birthday presents, artist friendships and more! The artworks in the Lower Level Gallery are all connected in one way or another.

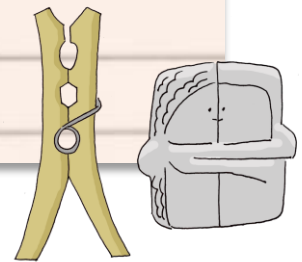
Explore these curious connections, then create your own.

**Choose three artworks in the Lower Level Gallery. How are they similar? How are they different?**

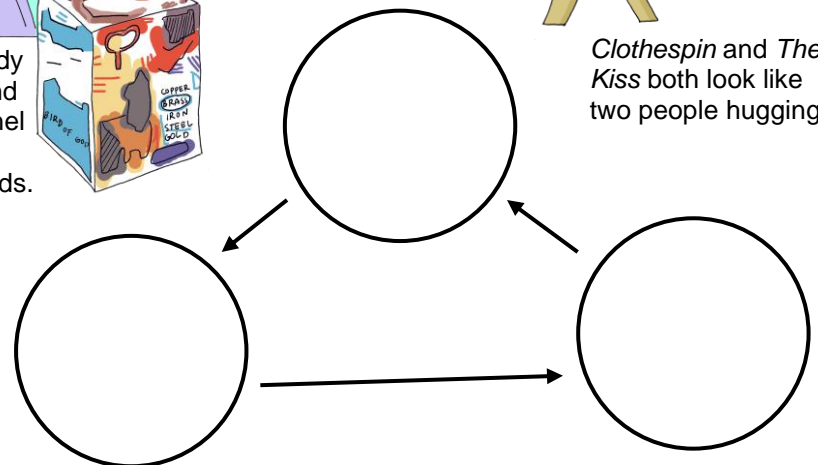
**In the circles below, sketch your artworks and write how they are connected.**



Artists Andy Warhol and Jean-Michel Basquiat were friends.



Clothespin and *The Kiss* both look like two people hugging.



Nasher Sculpture Center