

Nasher Sculpture Center

Scavenger Hunt and Garden Map

Directions: Find the eight sculptures shown in the pictures below. Then place the letter that corresponds with the sculptures where you found the work on the garden map. Next draw a line to show the path you took through the garden. One part of a curator's job is to select where the artwork is placed in the museum. If you were a curator where would you place the art?

a.



b.



c.



d.



e.



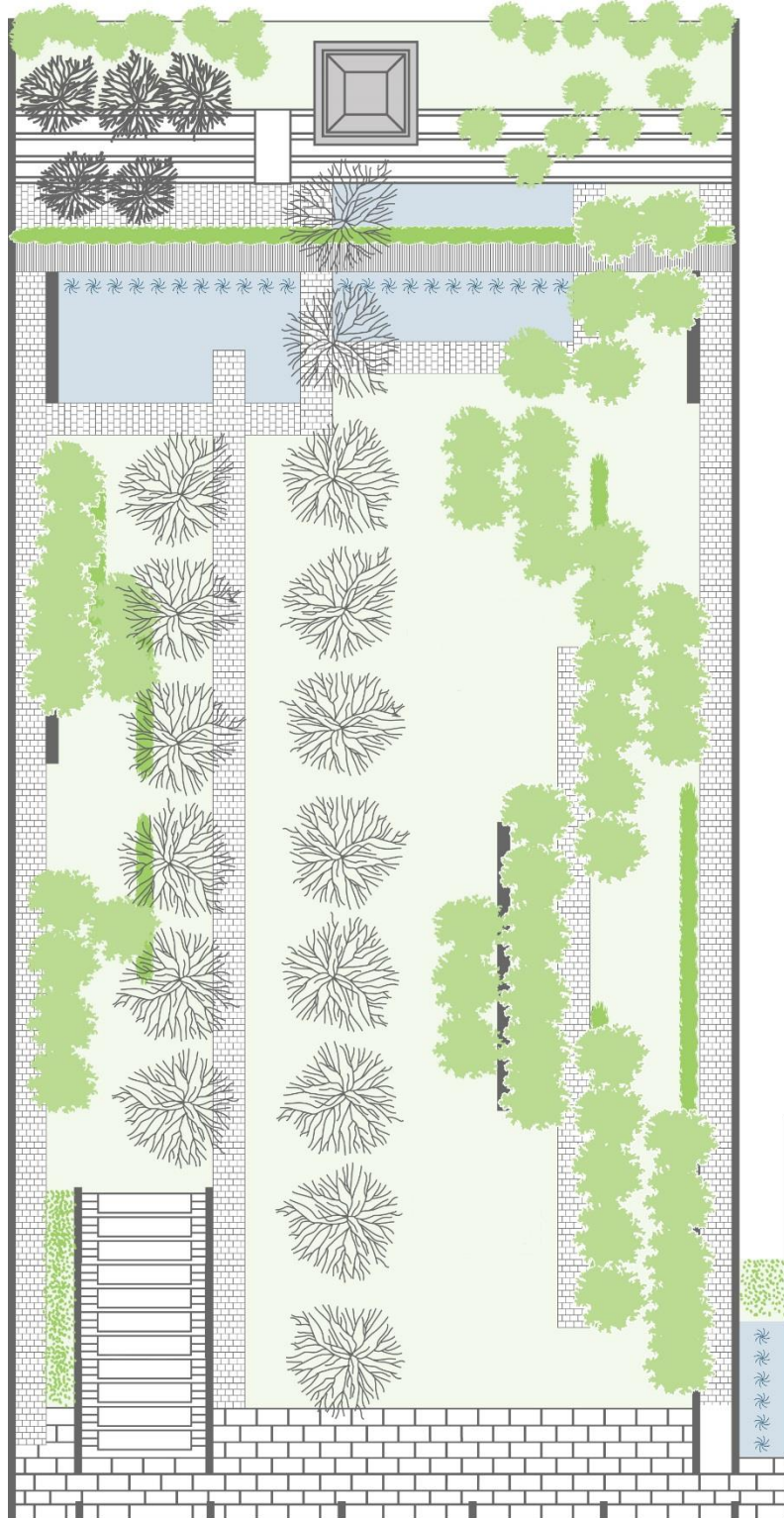
f.



g.



h.



Museum Entrance