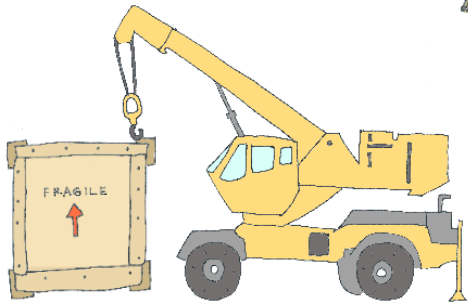
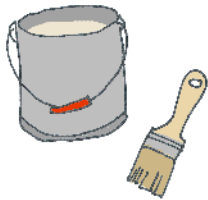


CREATING AN EXHIBITION

Family Guide



Nasher Sculpture Center

MY EXHIBITION

Imagine you could create an exhibition of five of your favorite things.

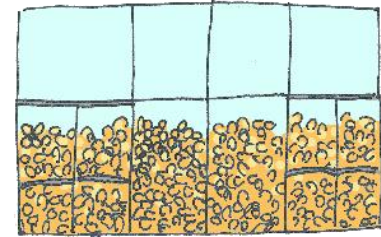
What would you include?

1. _____
2. _____
3. _____
4. _____
5. _____

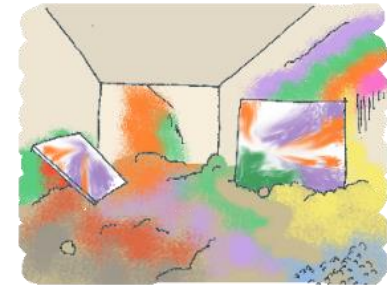
Draw how you would arrange your items below.



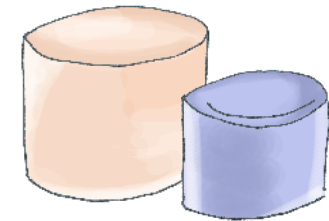
EXHIBITION FUN FACTS



In 2011, artist Martin Creed filled the Lower Level Gallery halfway up with gold balloons!



In 2013, artist Katharina Grosse covered the Lower Level Gallery floor with mounds of spray-painted dirt.



Artist Roni Horn's poured glass sculptures traveled from Iceland and weighed 10,000 pounds each.

What is the most interesting exhibition you've seen at a museum?

WHAT IS AN EXHIBITION?

An **exhibition** is a presentation of artwork focused on a main idea.

To create an exhibition, **curators** (who are experts in art and art history) think of a story they would like to share with others.

Sometimes the story is about an artist's life and work, a period of history, or it can be a big idea such as portraits throughout time.



Curators create a **checklist** of all the objects that they would like to include in the exhibition.

Write a checklist with drawings of three artworks you see.

Artist _____

Title _____

Artist _____

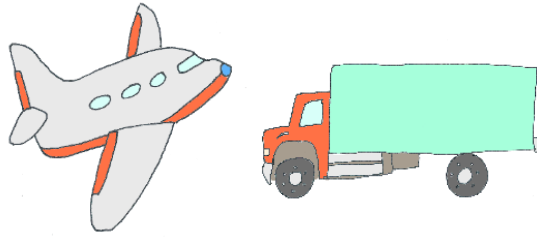
Title _____

Artist _____

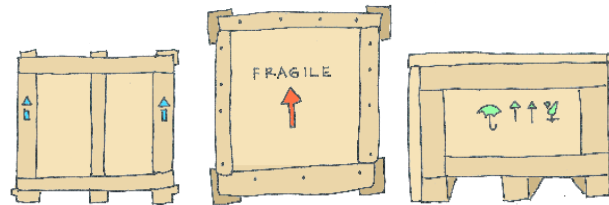
Title _____

HOW DOES THE ART GET TO THE MUSEUM?

Registrars help coordinate the arrival of the art. A registrar is someone responsible for taking care of artworks and keeping track of where the artworks are.

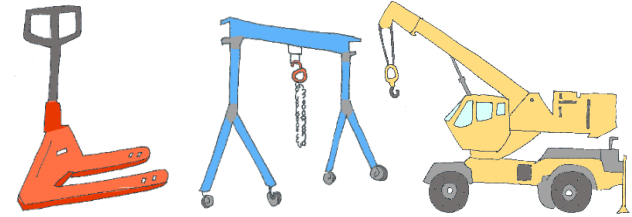


The artwork is packed safely in a **crate** (a wooden box made to fit the artwork perfectly) and loaded on a plane, ship or truck.



WHAT HAPPENS WHEN IT ARRIVES?

When the art arrives at the museum, it is unpacked by **art handlers** (people who are trained to treat artwork with special care). Sometimes, if the art is heavy or large, art handlers need special equipment like a **gantry, crane, pallet jack** or **forklift**.



Pallet jack

Gantry

Crane

The registrars make **condition reports** to be sure that the art looks the same as it did when it left another museum or the artist's studio. A condition report includes an image of the artwork with notes describing damages or changes.

Write a condition report for your shoe.

In this space, make a drawing of one of your shoes. Label the parts of your drawing to point out where the shoe has changed since it was new.