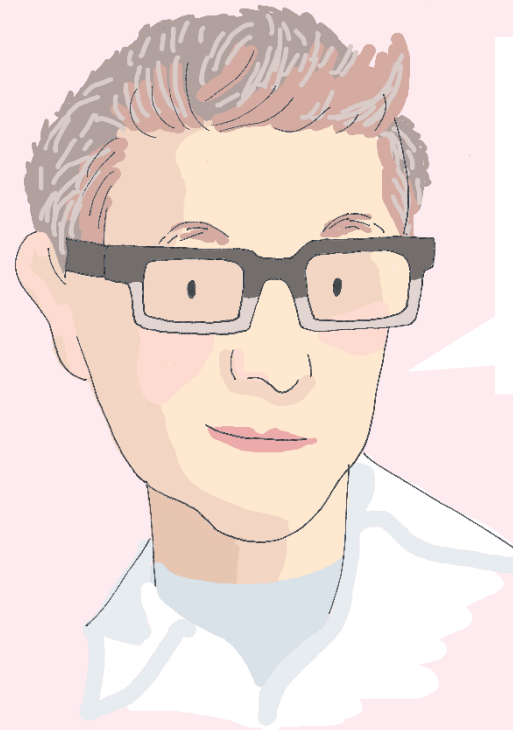




Family Guide

Meet Roni Horn.

She was born in New York in 1955. She lives and works in New York and Iceland.

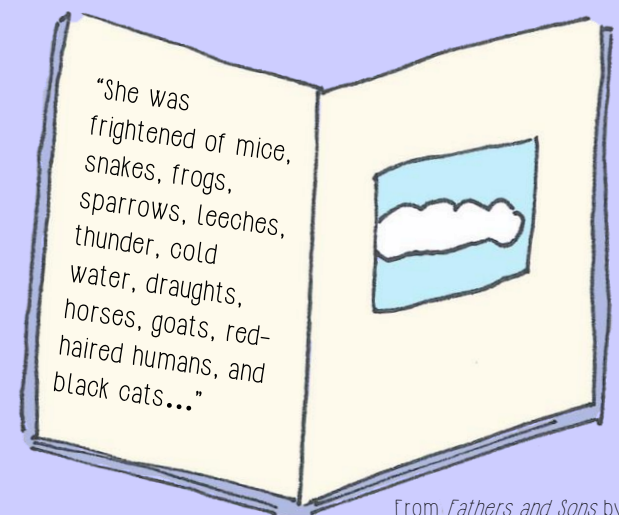


"I don't think of myself as a sculptor I just think of myself in a more broad way, so that allows me to draw upon these different forms without having to be identified with them."

Roni Horn creates sculptures, books, drawings and photographs.

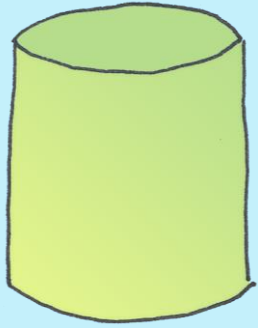
In her work she explores nature, the weather, literature, identity and pairs.

Horn uses quotes from poems and books as subtitles for her work. The subtitles are not the meaning of the work but a glimpse into what the artist was reading when she created the work.



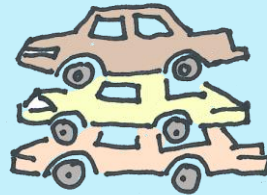
What is your favorite book?

From *Fathers and Sons* by
Ivan Sergeyevich Turgenev



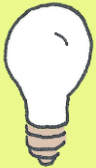
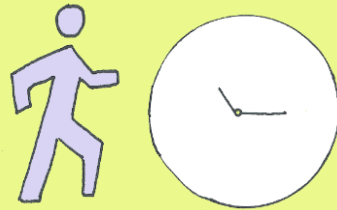
Roni Horn began making glass sculptures in the 1990s. The artist worked with SCHOTT, a glass and technology company in Pennsylvania, to create these sculptures. First, they made a mold for the sculptures using fire bricks. Next, they poured the glass for 8 days. Then the work cooled for 10 months

Each sculpture weighs over 10,000 pounds. That's like 3 cars stacked on top of each other!



When you check out Horn's sculptures

- Walk slowly
- Take your time
- Move carefully around the gallery



Consider

- Where else can you find glass?
- How will the light change in the gallery throughout the day?
- What relationship does each piece have to each other?

Roni Horn explains that the experience you have looking at the work is the work's meaning.

If you could name each of the colors, what would you call them?



In the next gallery you will see work by artists who were also inspired by stories.

Select your favorite work and make a sketch.



Now, create a story about the work.

Here are a few lines you could choose from to get you started.

Once upon a time....

You'll never believe what happened....

It was a dark and stormy night....

A large white rectangular area with horizontal blue lines for writing a story. A vertical pink margin line is on the left side.