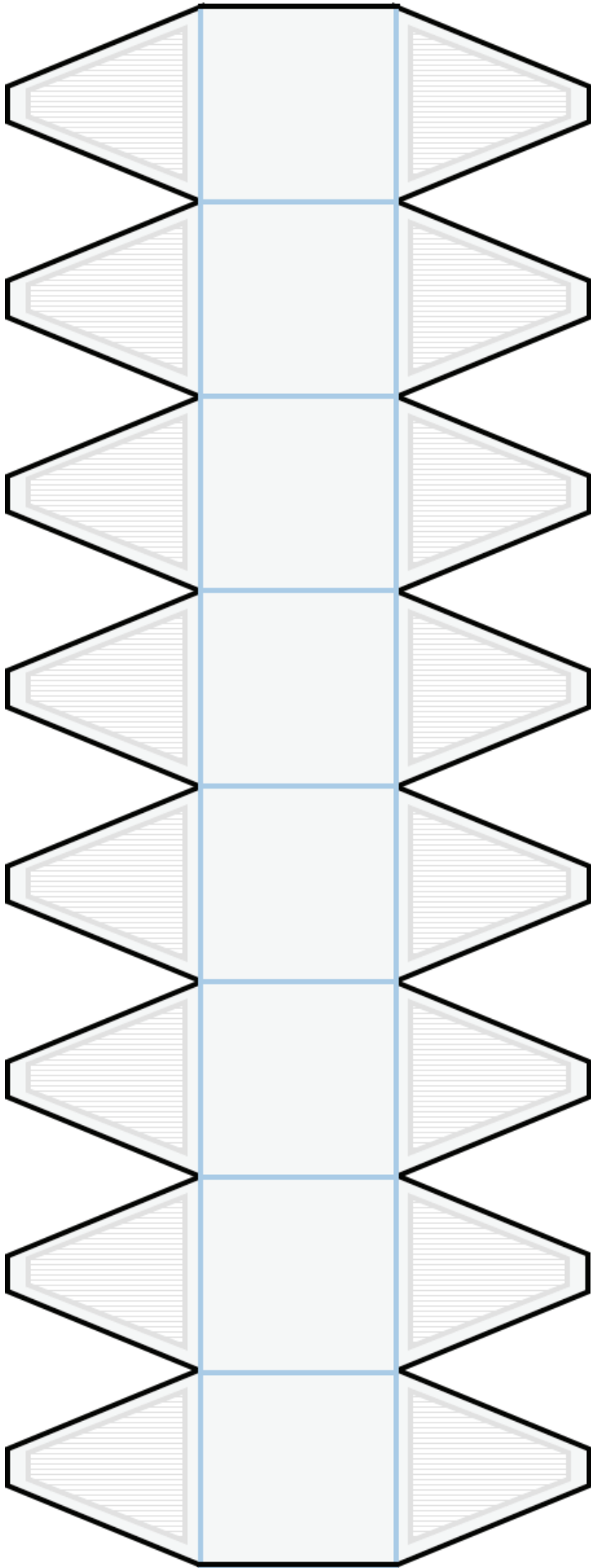


## MAKE YOUR OWN ROLLING BRIDGE

Cut along the black lines; fold in along the blue lines.



# FAMILY GUIDE

PROVOCATIONS: THE ARCHITECTURE AND DESIGN OF HEATHERWICK STUDIO



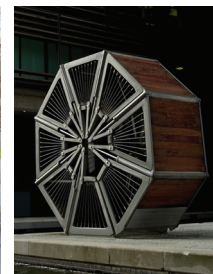
**MEET THOMAS HEATHERWICK** he lives and works in London, England. As a child he visited car shows, craft fairs and watched artisans blow glass, forge iron and knot hammocks. Heatherwick was curious about how machines worked and enjoyed drawing and making things.

**STUDIO** In 1994 Heatherwick opened his studio, which includes people from different backgrounds such as engineering, sculpture, photography and theater design. Heatherwick Studio worked on many exciting projects including re-designing the London bus, a rolling bridge and the 2012 Olympic Cauldron.

## PROJECTS



New Bus for London  
Photo: Iwan Baan



Rolling Bridge, London  
Photo: Steve Speller



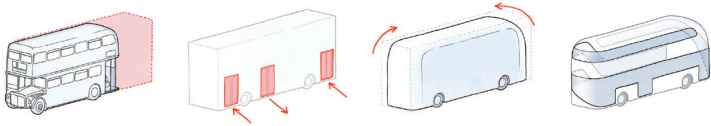
Olympic Cauldron, London,  
Photo: Edmund Sumner

## DESIGN



New Bus for London, Photo: Iwan Baan

**LONDON BUS** was redesigned to be energy efficient, wheelchair accessible and easier for riders to hop on and off.



**DRAW** the changes you would make to a city bus here.



Spun Chair, Photo: Susan Smart

## SPUN CHAIR

Heatherwick Studio was curious about creating a chair using the process of spinning metal. If you could alter the furniture in your home how would you make it move?

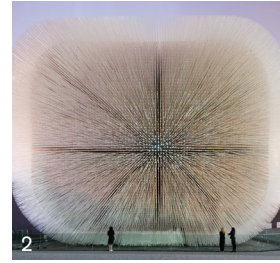
## INSPIRATION

Heatherwick begins by asking questions and finds inspiration all around him.

Can you **MATCH** the project to the inspiration below?



1 Rolling Bridge



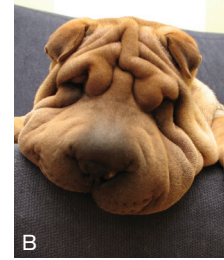
2 Seed Pavilion



3 Upholstered Furniture



A



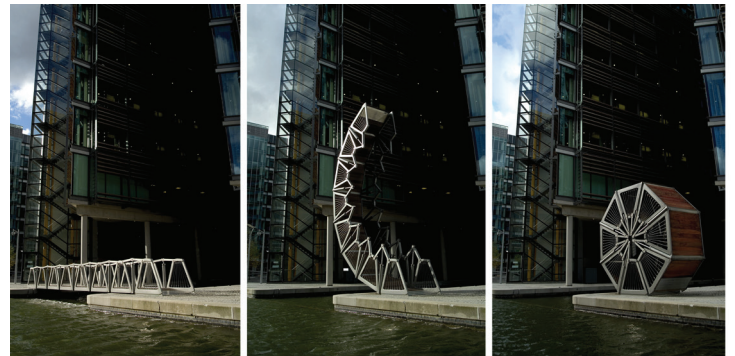
B



C

## ROLLING BRIDGE

Studio was asked to design a bridge for pedestrians that would also allow boats to pass. Inspired by animatronic dinosaurs in films that moved with the help of machines, the studio created a bridge made up of 8 sections that rolls up.



Rolling Bridge, London, Photo: Steve Speller

Design a **BRIDGE** inspired by an **ANIMAL**.

